



## The Cove



This contemporary two-bedroom, two-bathroom home is designed with modern living and entertaining in mind.

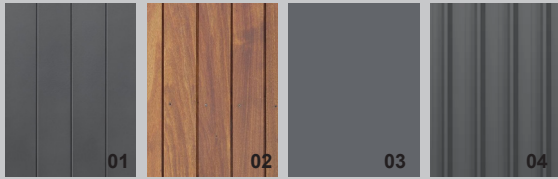
The raked ceilings to the open-plan living area adds to the sense of spaciousness, further enhanced by its connection to two alfresco areas.

The Cove is an ideal solution for lifestyle villages, community focused housing and work accommodation. Combining functionality, style, and comfort.

The Cove Exterior  
\* For illustrative purposes only

# FLEETWOOD

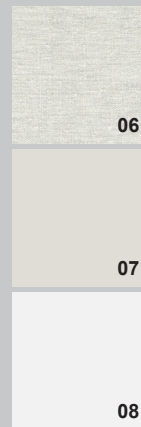
## AUSTRALIA



Dark Colour Scheme Exterior Finishes Options-  
 01 Axon™ James Hardie cladding, 02 Timber look decking and Pergola, 03 Colorbond Basalt base trims, 04 Colorbond Basalt Trimdek Roof Sheeting



The Cove offers a range of color schemes, making its design adaptable to your preferred setting. The darker exterior scheme, showcased on the cover page, embodies a modern and bold architectural style. This catalogue also includes curated dark and light mood board options, allowing you to choose the perfect palette for your space.



The Cove Kitchen and Dining  
 \* For illustrative purposes only



The Cove Bedrooms  
 \* For illustrative purposes only

Light Colour Scheme Interior Finishes Options 05-

Karndean Nordic Limed Oak flooring, Polytec Aston White joinery, Polytec Alicante benchtops, Montarosa-Spire carpets, Chrome fixtures, Quality tile finishes.

Interior Paint Colour Examples-

06 Linen look window treatments, 07 Whisper White Half, 08 Dulux Lexicon Quarter

# FLEETWOOD AUSTRALIA



QUALITY  
LIGHTING



REVERSE CYCLE  
AIR CONDITIONING



CHROME  
FIXTURES

- 2-bedroom x 2-bathroom
- 600mm appliance package
- LED Lighting throughout
- Quality floor coverings
- Double glazed windows
- Insulated internal walls
- Raking ceiling in living area
- Compliant with current NCC requirements (Climate Zone 4)
- Delivery and installation options available

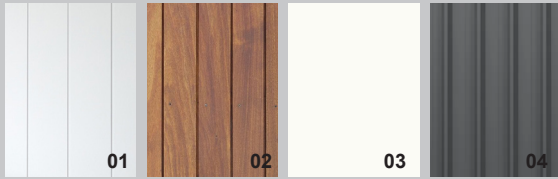


The Cove Interior Living  
\* For illustrative purposes only

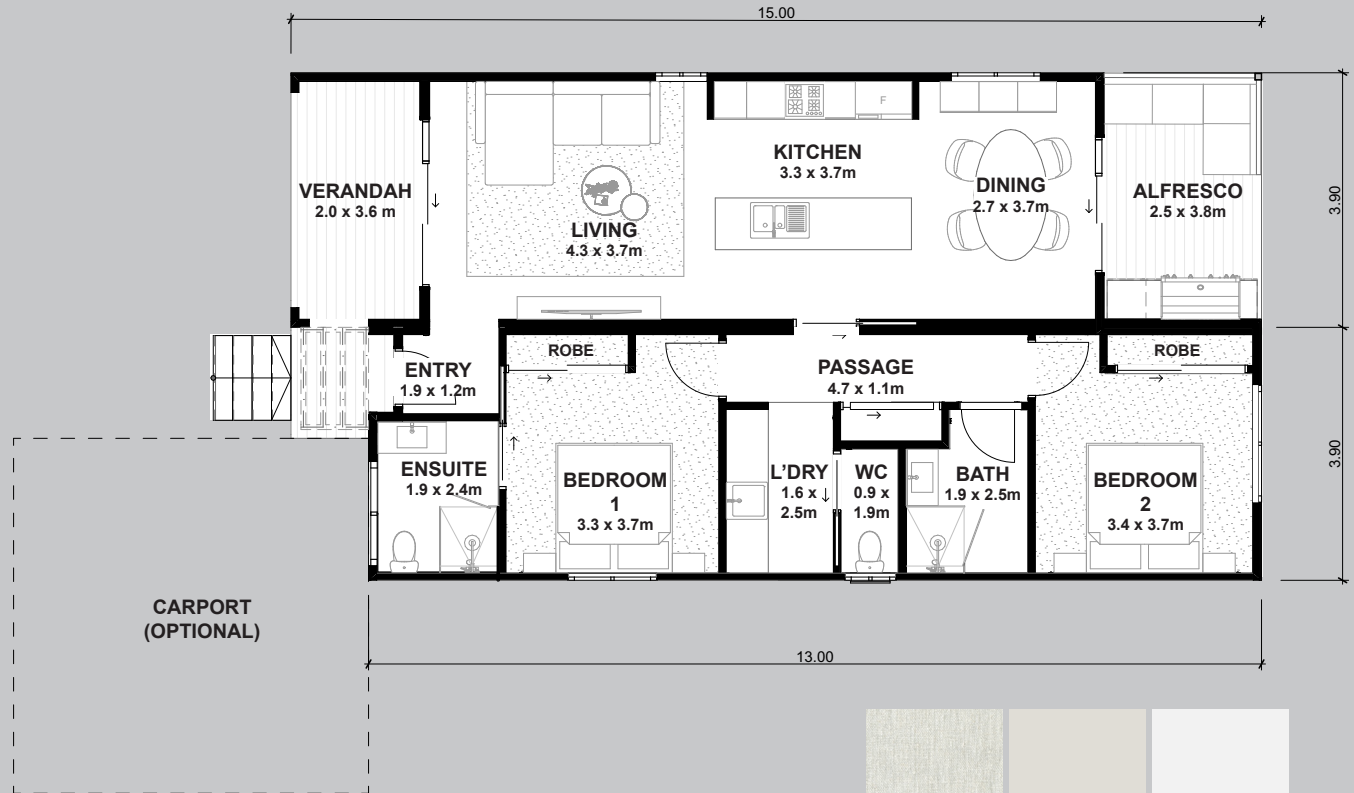


The Cove Bathroom  
\* For illustrative purposes only

# FLEETWOOD AUSTRALIA



AREAS	
Living	96.8 m2
Verandah	7.2 m2
Alfresco	9.5 m2
TOTAL	113.5 m2



**Light Colour Scheme Exterior Finishes Options-**

01 Axon™ James Hardie cladding, 02 Timber look decking and Pergola, 03 Colorbond Dover White trims, 04 Colorbond Basalt Trimdek Roof Sheeting

**Dark Colour Scheme Interior Finishes Options 05-**

Karndeian Nordic Limed Oak flooring, Polytec Black Ply joinery, Polytec Alicante benchtops, Montarosa-Spire carpets, Chrome fixtures, Quality tile finishes.

**Interior Paint Colour Examples-**

06 Linen look window treatments, 07 Whisper White Half, 08 Dulux Lexicon Quarter

