



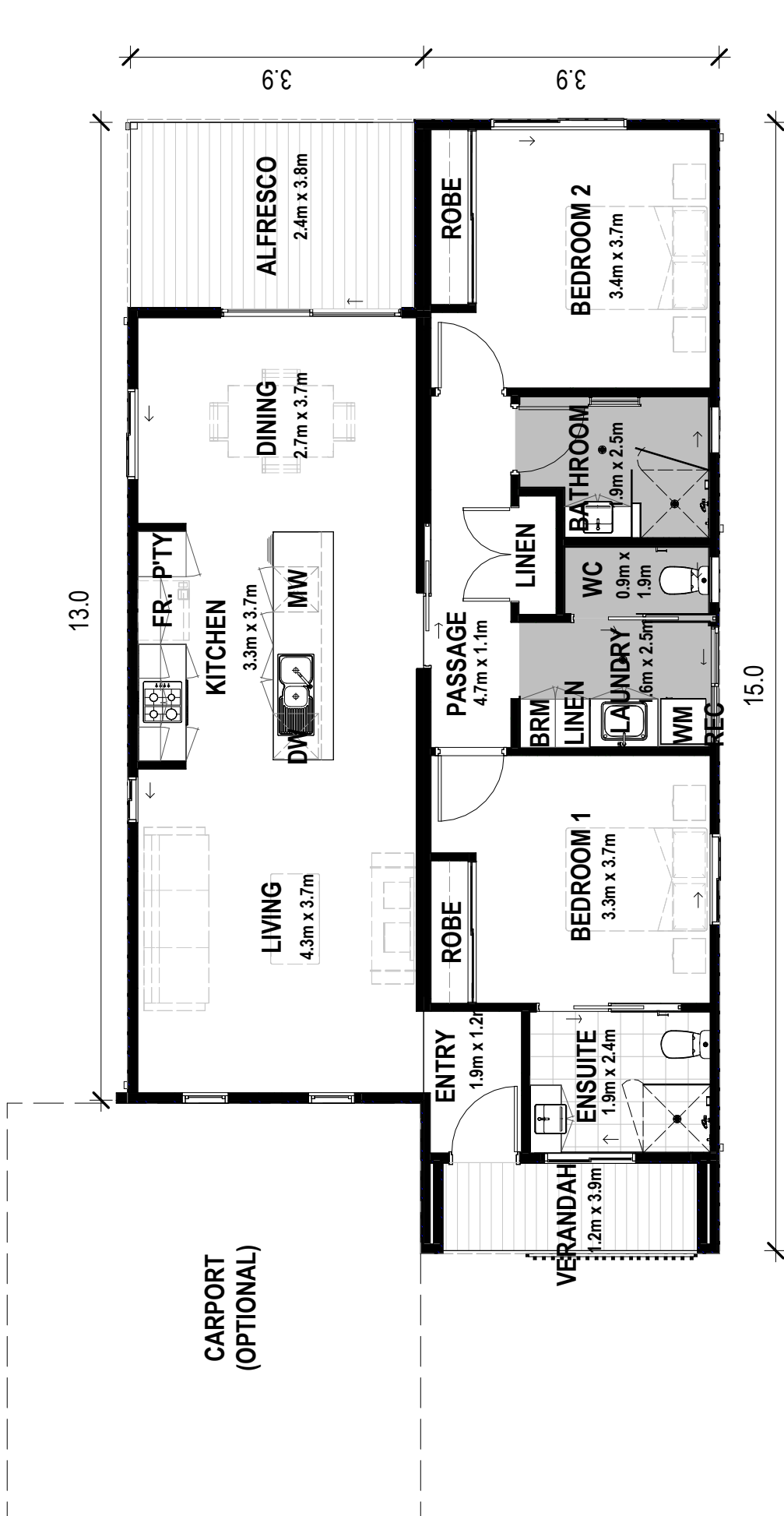
Kanyana



Welcome to the Kanyana, meaning “gathering place,” reflecting the community and connection our homes offer. This thoughtfully designed two-bedroom, two-bathroom home features an open-plan living area and an adjoining alfresco, ideal for modern living and entertaining.

The Kanyana is perfect for lifestyle villages, social and community housing, and key worker housing solutions.

- 2-bedroom x 2-bathroom
- 600mm appliance package
- Reverse cycle split A/C in living area
- Vinyl plank flooring and carpet in bedrooms
- LED lighting throughout
- Double glazed windows
- Insulated internal walls
- Raking ceiling in living area
- Modern façade with timber-look screen
- Compliant with current NCC requirements (Climate Zone 4)
- Delivery and installation options available



AREAS	
LIVING	96.8m ²
VERANDAH	4.5m ²
ALFRESCO	9.3m ²
TOTAL	110.6m ²



sales@fleetwood.com.au



1300 123 272

*Images for illustration only. Locations subject to assessment. Exclusions apply; contact our sales team.

